



CROSS COUNTRY

Your Source for Pipeline, Terminals, & Refinery Pump Rentals & Sales

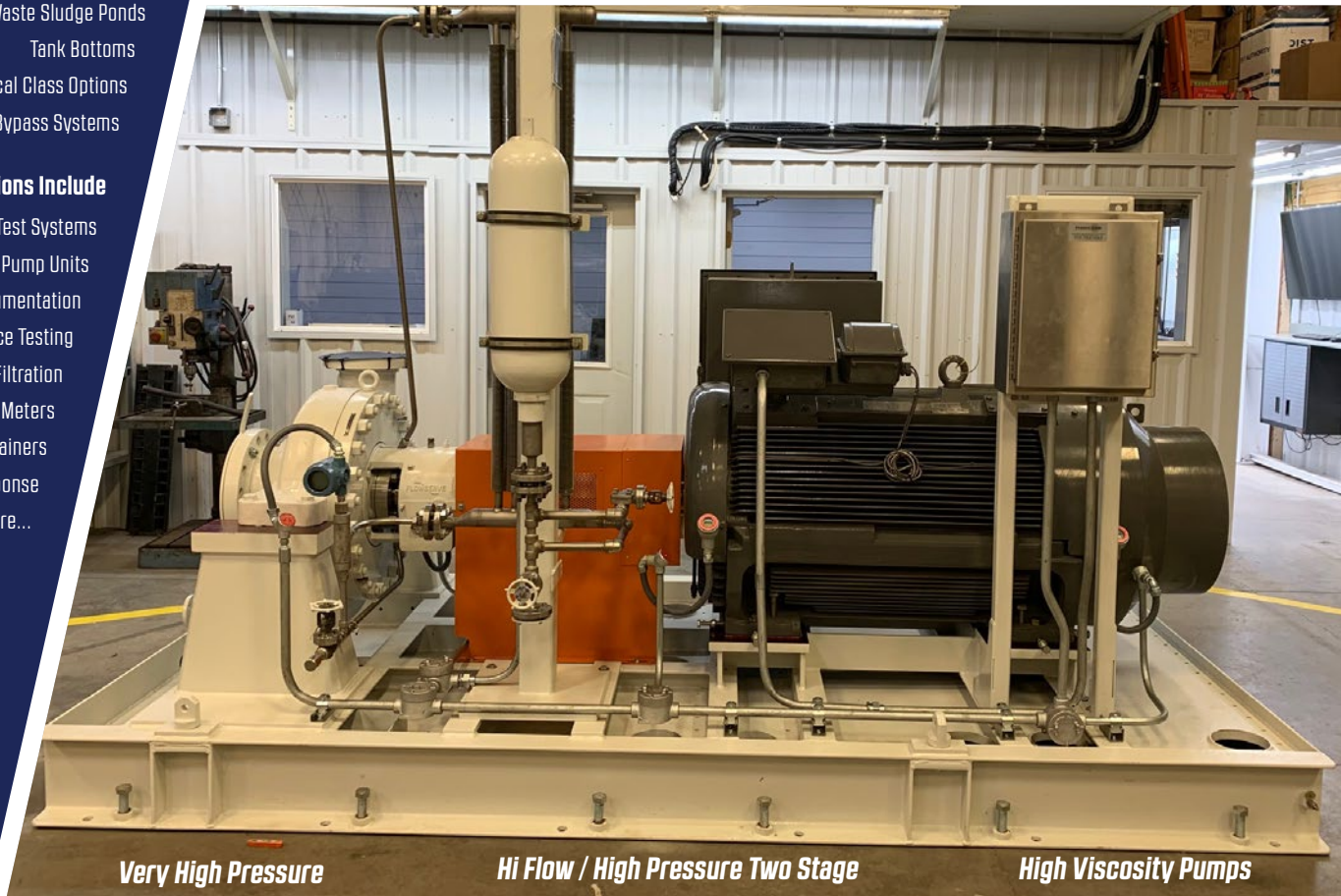
New, Surplus, & Remanufactured Pump
Units of Nearly All Types.
As New Condition and Fully Tested.

Pumps for Rental in Tough Applications

- Plunger Pumps for Well or Chemical Injection
- Boiler Feed Pumps
- Temporary API 610 / ANSI Process
- High Viscosity or High Temperature
- Pulp Paper & Waste Sludge Ponds
- Tank Bottoms
- Electrical Class Options
- Bypass Systems

Other Solutions Include

- Hydrostatic Test Systems
- Cooling Tower Pump Units
- Drawing Documentation
- Performance Testing
- Filtration
- Flow Meters
- Strainers
- Hurricane Response
- And More...



Very High Pressure

Hi Flow / High Pressure Two Stage

High Viscosity Pumps



Contact Us Today at **1-855-955-CCIS (2247)** or Visit **CrossCountryIS.com**





Available Units

CENTRIFUGAL PUMPS					
PZE WO	Description	Flow BEP (GPM)	Head BEP (Ft)	Driver Type	HP
-	Worthington 12 LBS-32	10000	340	Diesel	1100
-	Flowsolve 10HDX27B	6060	760	4160 Volt	1500
10659	Union 8x10 MRF	4710	1785	Diesel	2500
10504	Peerless 10AE20	4200	260	Diesel	400
-	Sulzer Bingham 8x10x13A MSD	2875	3000	Diesel	2800
-	United 8x12 DVS-C	2625	485	4160/2300 Volt	500
10520	United 8BFH	2410	2345	Diesel	1875
10576	Fairbanks Morse 2824C	2000	230	Diesel	210
10521	United 6BFH	1890	2645	Diesel	2250
10708	Byron Jackson 4x6x9D DVMX	1510	3980	Diesel	2000
10508	Patterson 6x5 M	1100	155	Diesel	110
10608	Ingersoll Rand 4x9N	800	1900	Diesel	760
-	Wilson Snyder 3x4x16 ESN	720	865	460 Volt	300
-	Ingersoll Rand 3x10DA-5	415	1840	4000 Volt	300
-	Ingersoll Rand 3 WIK	210	8955	TBD	TBD
-	Goulds 3335	205	1100	460 Volt	100
-	Sulzer Bingham MC 50-10	95	3070	440 Volt	150

RECIPROCATING PUMPS					
PZE WO	Description	Flow BEP (GPM)	Head BEP (PSI)	Driver Type	HP
10675	Gardner Denver TAE Triplex	50	4645	460 Volt	150
-	National J-250M	135	2250	460 Volt	250
10517	TX-200 Triplex	145	2105	Diesel	200
10470	QX-300 Quintuplex	275	1980	Diesel	350
10528	Aplex MA-40M	30	1950	230/460 Volt	40
10697	Wheatley HP-250M Triplex	200	1950	460 Volt	250
10469	National JWS-165-L Triplex	415	1910	Diesel	225
-	Gasco 3088-M Triplex	70	1635	460 Volt	40
10584	Oilwell A-348-5 Triplex	530	1455	Diesel	500
-	Gasco 1755 Duplex	80	1360	460 Volt	125
10582	Oilwell B-558 Quintuplex	765	1270	Diesel	630
-	Gasco 2652 Duplex	700	1125	460 Volt	200
10472	Union TX-90	140	1000	Diesel	130
-	Gasco 2652 Duplex	470	780	460 Volt	250



Accessories, Supporting Equipment, & Other Services

We supply API 610 , ANSI, Dry & Self Prime, Submersible, Plunger (PD), Standard Split Case, Trash Pumps, Gear or Vane. We solve for the clients need, the flow rate, pressure, & materials of construction as best required. Fluids that are thick to very thin, clean to nasty; from heavy produced water to LPG, crude oil or anything in between. We have a large "on hand" inventory over most of North America. Specialty transfer & process pumps with materials of construction & seal plans to fit your application. If you have "time to plan" for a turnaround down time, we will assemble a unit to your project specification affordably & timely, and to industry standards. Our experienced, fluids solutions group, will review any challenging job.

If we don't have it in house, we will tell you where to find it or build you one. We can design and fabricate, pump, filtration, metering & controls systems for nearly any environment.

LOW Head DRY PRIME Centrifugal/Diesel Driven

4 x 4 /4NNTL /Air Prime 1200 GPM/ 50 PSI. / Trailer
6 x 6 / 6NNT air prime /2500 GPM/ 55 PSI/ trailer
6 x 6 / 6NNT VAC prime /2500 GPM/ 55 PSI/ skid
8 x 6 / 6HH Air Prime/ 3500 GPM / 150 PSI
8 x8 / 8NNT / Air Prime 4800 GPM/ 90 PSI / Trailer
8 x8 / 8NNT / Air Prime 4800 GPM/ 90 PSI / Trailer / Silent
10 x 8/ 8NHTA/ Air Prime 4500 GPM/ 130 PSI/ Trailer
10X8 / 8NHTA / Air Prime 4500 GPM/130 PSI/ Skid

Electric or Hydraulic Submersible Pumps Sludge Master/ Extreme Viscosity

Hyd Pumps - HT60DJV / 6" /1200 GPM / 100 FT Head
Hyd Pumps - HT8 0DJV / 8" /2200 GPM / 100 FT Head
Hydraulic Power unit/ SKID OR TRAILER
12" Electric w/ VFD Controls 5000 GPM / 50 FT Head

High Pressure Plunger Test Pumps with Pressure Relief Valves/Diesel Driven

ATLAS - Fractional GPM/ 6000PSI (Air Driven)
MAC 24 - Fractional GPM/ 6000PSI (Air Driven)
MAC 26 (2) stage 6000 PSI (Air Driven)
HP- M06 - 5000 / 4.5 GPM/ 5000 PSI (Diesel Drive)
HP 28 -5000 / 28 GPM/ 5000 PSI (5 speed)
HP-33-5000 / 33 GPM / 5000 PSI (5 Speed)
HP 55 -3000 / 50 GPM/3000PSI (5 Speed)
HP125 -3000 / 140 GPM / 3000 PSI (5 Speed)
HP165 3000PSI / 175 GPM / 3000 PSI (5 Speed)
HP - HD600 - 3000PSI / 380GPM / 3000PSI (6 Speed)
HP165L -1000 / 250 GPM/ 1000 PSI (direct drive)
HP165M-1345/ 170 GPM / 1345 PSI (direct drive)
HP600-L-1000 / 608GPM /1000 PSI
PAI MIDWEST COMBO FILL & TEST UNIT : HTU 350
PAI MIDWEST COMBO FILL & TEST UNIT : HTU 500
4" Sludgemaster - High Viscosity

HIGH Head DRY PRIME

6 x4 /4622MX /1600 GPM/ 280 PSI /Trailer
8 x6 /6822MX/ 4000 GPM/ 280 PSI /Trailer
10 x8 /8NHHT/ 7500 GPM/ 195 PSI /Trailer
12 x 8 /8NHG19 / 8000 GPM/ 260 PSI/ Trailer

HIGH Head Horizontal Split Case For Use With Low Head or Flooded Suction

4X2 IR Two Stage 400 GPM-/400PSI
4X3 DMD 900 Two Stage 900 GPM/ 250 PSI
5X3 DMD 900 Two Stage 950 GPM / 350 PSI
6 X 6 5TUT three stage /1600 GPM/ 400 PSI
6X6 DMD 2000 Two Stage/ 2000 GPM/ 300 PSI
10X10 DMD 3600 Two Stage /3600 GPM - 350PSI
12 x 10 Worthington/ 7000 GPM/ 285PSI

LOW Head Standard Centrifugal Horizontal Split Case; Flooded Suction

8X6 MI 2500 /Patterson/ 2500GPM-140 PSI/ Skid
10 X8 MA 4000GPM-140 PSI

Accessories and Supporting Equipment

Stroke Counter Assemblies
1" Check Valves (for use on HP pumps)
2" Check Valves (for use on HP pumps)
HIGH PRESSURE FILL AND TEST HOSES
FILL AND TEST METERS / STRAINERS / FLOATING SUCTION
VALVES-BALL, PLUG, GATE, 300#, 600#, 900#

**Selected Configurations Available In Stock.
Contact a Representative for Additional Options.**



Accessories, Supporting Equipment, & Other Services



Hard to Find Rental Pumps

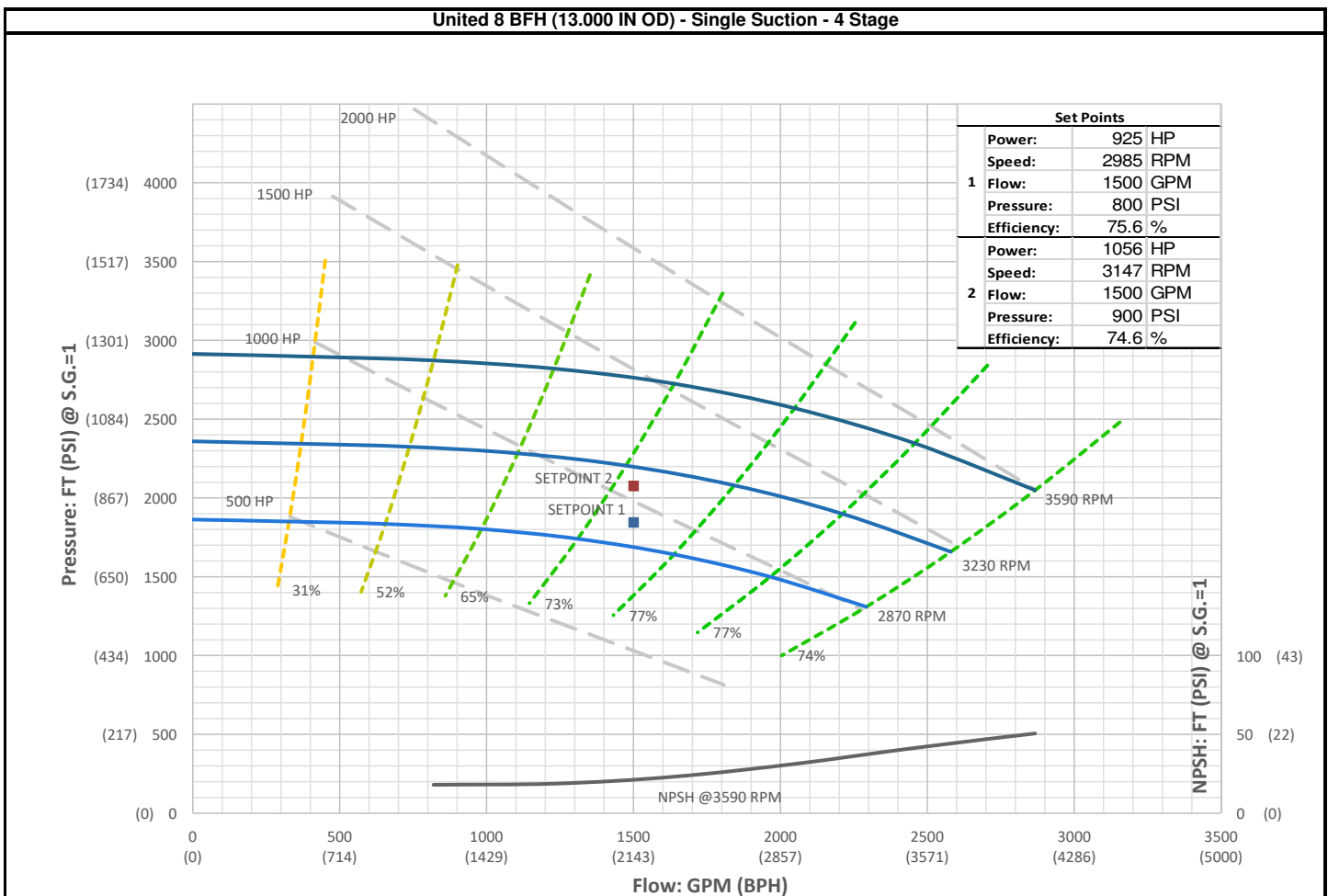


Plunger Pumps - 600-3000 PSI



Unusual Pumps

8BFH Performance Curve



Note: The information provided in this document has been generated from pump curves and information from the original equipment manufacturer that has been made available to Power Zone Equipment, Inc. Upon completion of a rebuilt pump, an as built and tested curve can be generated. The provided information is for estimation purposes only. Full responsibilities for purchased equipment from PZE is written in PZE's warranty statements.

MAKE: United	MAX IMP. DIA.: 13.000 IN	MAX EFF.: 78.1%	PZE STOCK NUM: 57293
MODEL: 8 BFH	MIN IMP. DIA.: 10.000 IN	MAX SPEED: 3590 RPM	PZE CURVE NUM: 10520-57293-PZE-1
INLET SIZE: 10" 600#	IMP. DIAMETER: 13.000 IN	BEP FLOW: 2297 GPM	MFG. SERIAL NUM: RB10050-11
OUTLET SIZE: 8" 600#	NUM. OF STG.: 4 OF 4	BEP HEAD: 2444 FT	DATE: 2-Dec-2019



Contact Us Today at **1-855-955-CCIS (2247)** or Visit **CrossCountryIS.com**