



PAI Model DMD 2000 Pump Unit

The PAI Model DMD 2000 pump package is designed for a broad range of pumping applications, requiring high volume or high pressure. The standard PAI DMD 6' X 6" pump is powered by a Caterpillar Model 3406 DITA diesel engine (optional engines available) producing 400 HP @ 1,800 RPM.

Two units can be hooked in series to double the pressure shown on the curve.

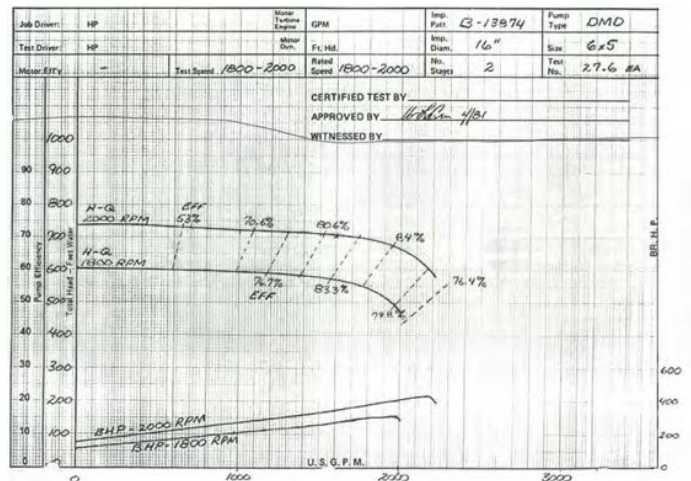
This 6x6 two-stage pump has a very flat curve which can achieve multiple points of operation while remaining within a favorable performance range.

The work horse of the CCIS Pipeline high head filling – and Jetting applications.

In series these units are capable of producing 600 PSI near Pack off.

FEATURES

- Compact size
Dimensions: 60" w x 95" h x 198" l
Weight: 9,500 lbs.
- Pump-patterson two stage equipped with packing or mechanical seals
- Heavy duty skid base with protection frame, single point lift, forklift slots, and pipe ends for tail boardings
- Suction 6" - discharge 6" with discharge check valve

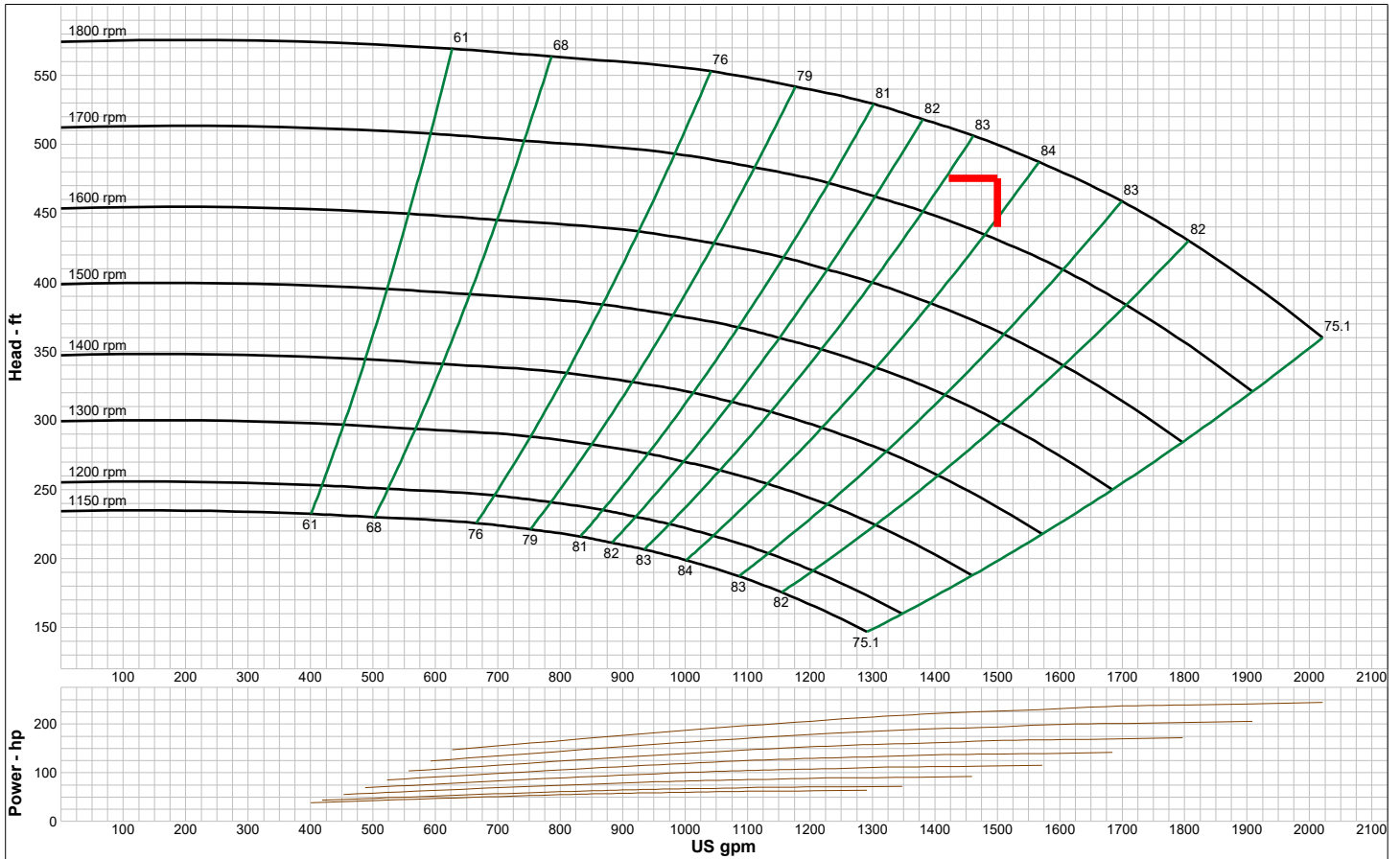


PUMP CURVE SHOWING PRESSURE @ 1,800 RPM AND 2,000 RPM



Contact Us Today at **1-855-955-CCIS (2247)** or Visit **CrossCountryIS.com**

6x6 DMD Speed Curve



In accordance with the Hydraulic Institute Standards, pump is guaranteed for one set of conditions. Performance guarantees are based on shop test and when handling clear, cold, fresh water at sea level and at a temperature no greater than 85 degrees F. Suction lift must not exceed that shown on curve.

Company: Patterson Pumps Company
 Name:
 6/14/2011

Patterson 60 Hz Pumps
 Catalog: Patterson Pumps 60HZ, Vers 1.2
 TwoStage_HSC - 1800

Size: 6x5 DMD-F
 Speed: 1150 - 1800 rpm
 Dia: 16 in
 Curve: 5DMD-F
 Impeller: B-12675, B-1267



Specifications shown for this model. Contact us for information on additional models.
 Specifications subject to change without notice.



Contact Us Today at **1-855-955-CGIS (2247)** or Visit **CrossCountryIS.com**