

Pig Launchers and Receivers

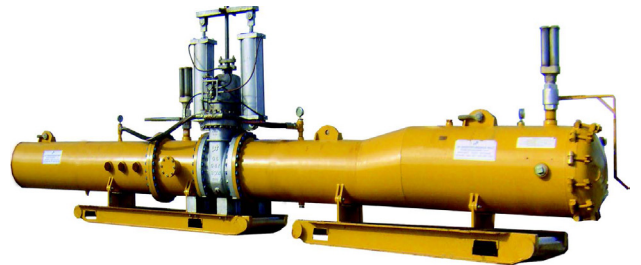


Pig Launcher

The Pig Launcher is designed to work in conjunction with a hydrostatic testing system. The result of decades of experience in the pipeline industry, the launcher is built to withstand the rigors of testing on construction sites and remote locations.

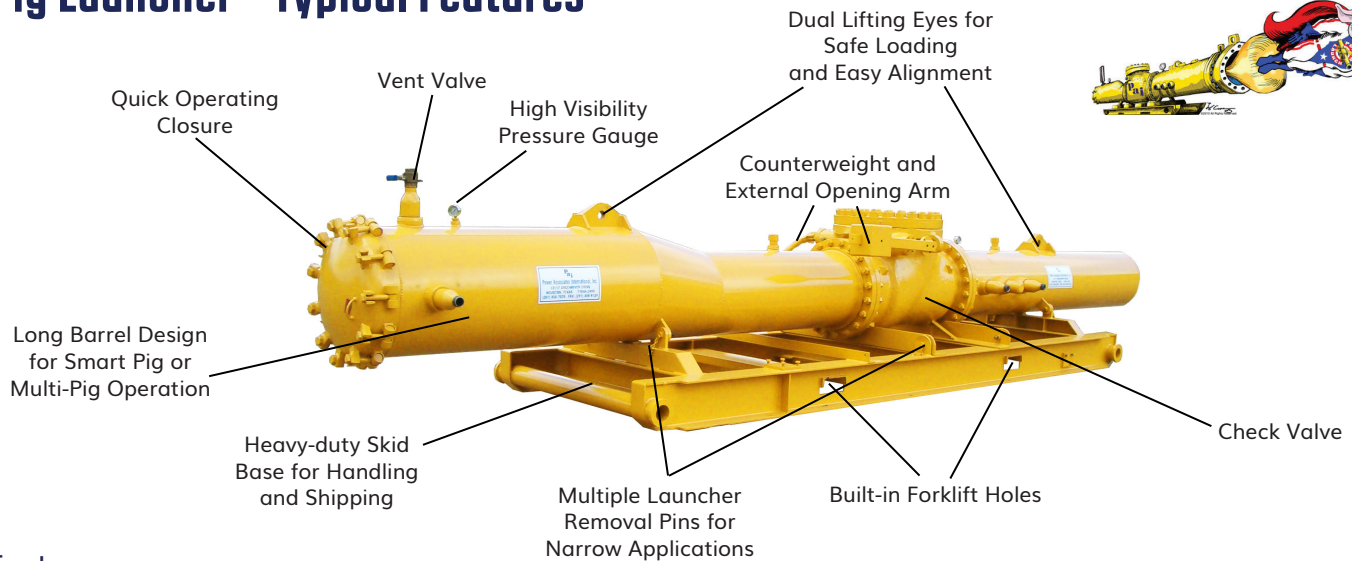
Pig Receiver

Designed from decades of experience in the pipeline industry. Constructed to the same tolerances for rugged durability as our launchers, it delivers solid performance under harsh work site conditions.



**For Pricing And Availability Contact Our Sales
Team at 1-855-955-CCIS (2247)**

Pig Launcher - Typical Features

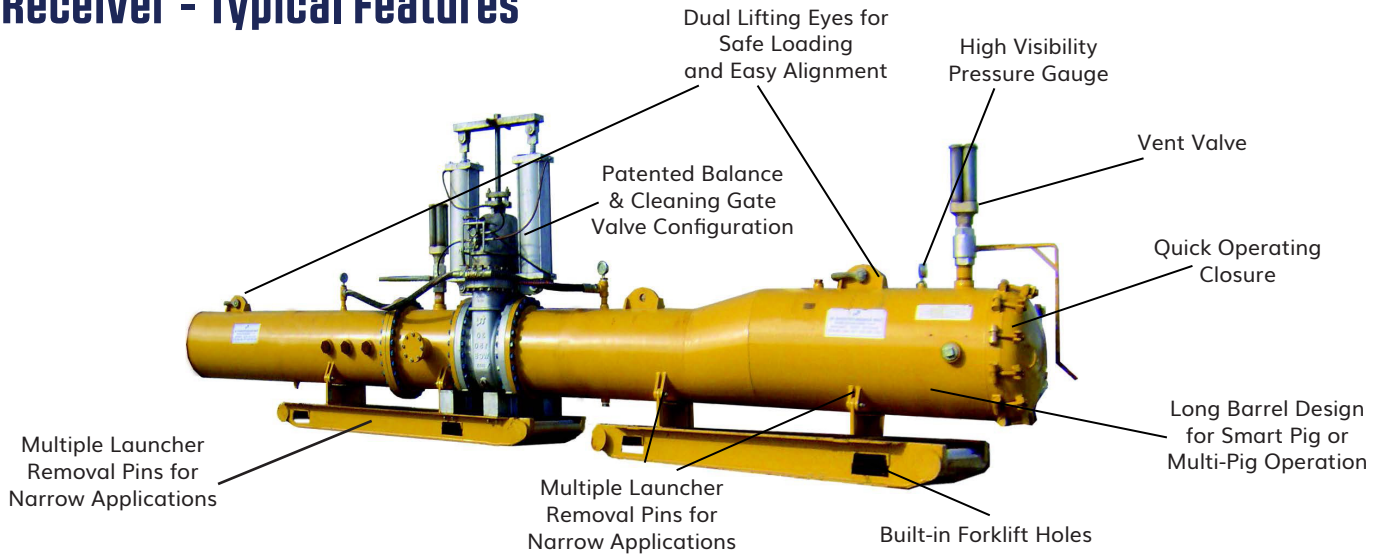


Features

- Features Check Valve for Multi-Pig Launch Operation with Air Actuators on Models 24" and Above.
- Fully Assembled on Heavy Duty Skid Base with Forklift Slots, and Pipe Ends for Tail Boarding.
- Dual Lifting Eyes for Ease of Positioning and Safe Handling.
- Sizes 3" to 42" Available for Sale or Rent.
- Flange Adapters in 300#, 600# & 900# for Pipeline Tie-in Available on 4" to 24" Models.
- Easy Access Swing Bolt Closure.
- Multiple Air Pressure Inlet Ports
- Air Mufflers for Reduced Decibel Blow Downs
- Design Pressure 150 PSI

Photo shows 24" model launcher. Configuration will vary based on diameter of unit. Contact us for information on additional models. Specifications subject to change without notice.

Pig Receiver - Typical Features



Features

- Features Patented Balance and Cleaning Gate Valve Configuration (Patent Nos. 8,689,384; 8,312,584 & 8,701,234)
- Air Actuators on Models 16" and Above
- Fully Assembled on Heavy Duty Skid Base with Forklift Slots, and Pipe Ends for Tail Boarding.
- Dual Lifting Eyes for Ease of Positioning and Safe Handling.
- Sizes 3" to 42" Available for Sale or Rent.
- Flange Adapters in 300#, 600# & 900# for Pipeline Tie-in Available on 4" to 24" Models.
- Multi-port Air/Water Pressure Inlet and Outlet Nozzles for Cleaning
- Discharge Port for Foreign Material Removal Before Gate Valve
- Dual Air Outlet Valves for Training Pigs
- Air Mufflers for Reduced Decibel Blow Downs
- Design Pressure 150 PSI

Photo shows 30" model receiver. Configuration will vary based on diameter of unit. Contact us for information on additional models. Specifications subject to change without notice.