

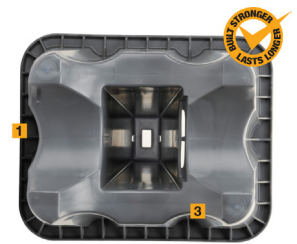


ONE TOUGH PIPE STAND...

- **VERSATILITY** - Supports Multiple Pipe Diameters
- **STABILITY** - Square Design,* Wider Footprint / More Ground Contact than Round Cones
- **STRENGTH** - Reinforced for Maximum Loads
- **DURABILITY** - Heavy Duty Construction
- **SAFETY** - Dual Support System
- **SPACE SAVING** - Stackable, Efficient Storage
- **EASY TO HANDLE** - Lightweight, Handles

ONE OF A KIND...

- 1. SQUARE DESIGN** - Increased safety and contact with the ground
- 2. CENTER SUPPORT** - Provides maximum load ratings
- 3. DUAL SUPPORT** - Two methods of support: corrugated sidewalls & center support
- 4. CORRUGATED SIDES & RIBS** - Improved performance under extreme heat and stress
- 5. HEIGHT & MULTI-DIMENSIONAL TOP** - 24" to the saddle for ease of working; Smaller Cradle: up to 6", Larger Cradle: up to 12"
- 6. STACKING** - Cones nest together and square base allows for easier transportation
- 7. HANDLING** - Center handle (cut out) to allow for ease of handling / setting of stands



Corrugated Side Walls for Enhanced Strength



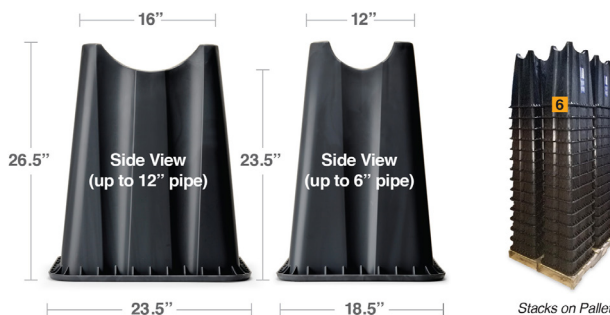
Reinforced Center Column & Saddle



Built-In Handle for Ease of Use

TECHNICAL SPECIFICATIONS

Model	Base	Top	Saddle	Weight
TS12B-ET	23.5" x 18.5"	16" x 12"	3" Deep	20 lbs



Stacks on Pallet

For Pricing And Availability Contact Our Sales Team at 1-855-955-CCIS (2247)