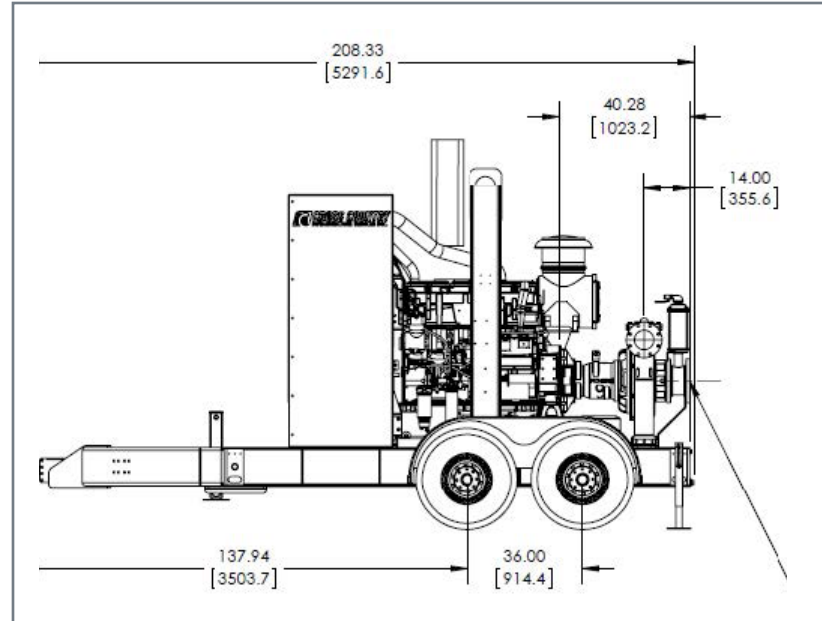




Vacuum Assisted Centrifugal Pump

Pioneer Venturi Prime Vacuum Assisted Centrifugal Pump

Spec Sheet for Model VP86C21L71-C18



Features

- Indefinite Run-Dry Capability
- Environmentally Safe Priming System
- Automatic Engine Start/Stop Controls
- Panel Mounted Vacuum & Pressure Gauges

Pump Package Overview

Suction Size	8 Inch
Discharge Size	6 Inch
Max Flow	3,750 USgpm
Max Head	591 feet (255 psi)
Solids Size	1.5 inches
Max Speed	1,880 RPM
Trailer Weight	Dry: 11,300 lbs
Trailer Brakes	Electric
Trailer Hitch	Bumper Pull with Pintle

Engine Controls

Murphy MPC-10 L2

Fully Programmable Automatic Start/Stop
Accepts inputs from transducers, in addition to standard level control floats

Engine Specifications

Caterpillar	C18, 6 Cylinder Diesel Engine
Displacement	18.1 L, 1106 cubic inches
Fuel Tank, Typical	250 US Gal
Fuel Consumption	28.7 GPH @ 1800 RPM
Continuous Horsepower	600 HP @ 1800 RPM
Operating Time	8.7 hours
Safety Shut Down Switches	Low Oil Pressure, High Temperature and V-Belt Failure
Instrument Panel	Oil Pressure Gauge, Ampmeter, Hourmeter, and Tachometer

Materials of Construction

Impeller: 21.00"	ASTM A744 CA6NM Stainless Steel
Shaft	17-4 PH Stainless Steel
Wear Ring	ASTM A48 Class 40 Gray Iron
Backplate	ASTM A536 Grade 65-45-12 Ductile Iron
Volute	ASTM A536 Grade 65-45-12 Ductile Iron
Mech Seal	Tungsten Carbide vs. Silicon Carbide Seal Faces
Bracket	ASTM A536 Grade 65-45-12 Ductile Iron

Pioneer Venturi Priming System

Priming System	Air Compressor with Venturi Eductor Valve
Air Removal Capability	13 CFM
	Positive sealing air separation PosiValve™ with stainless steel Float ball & linkage.
	Swing Style - Ductile Iron with Buna-n Disc

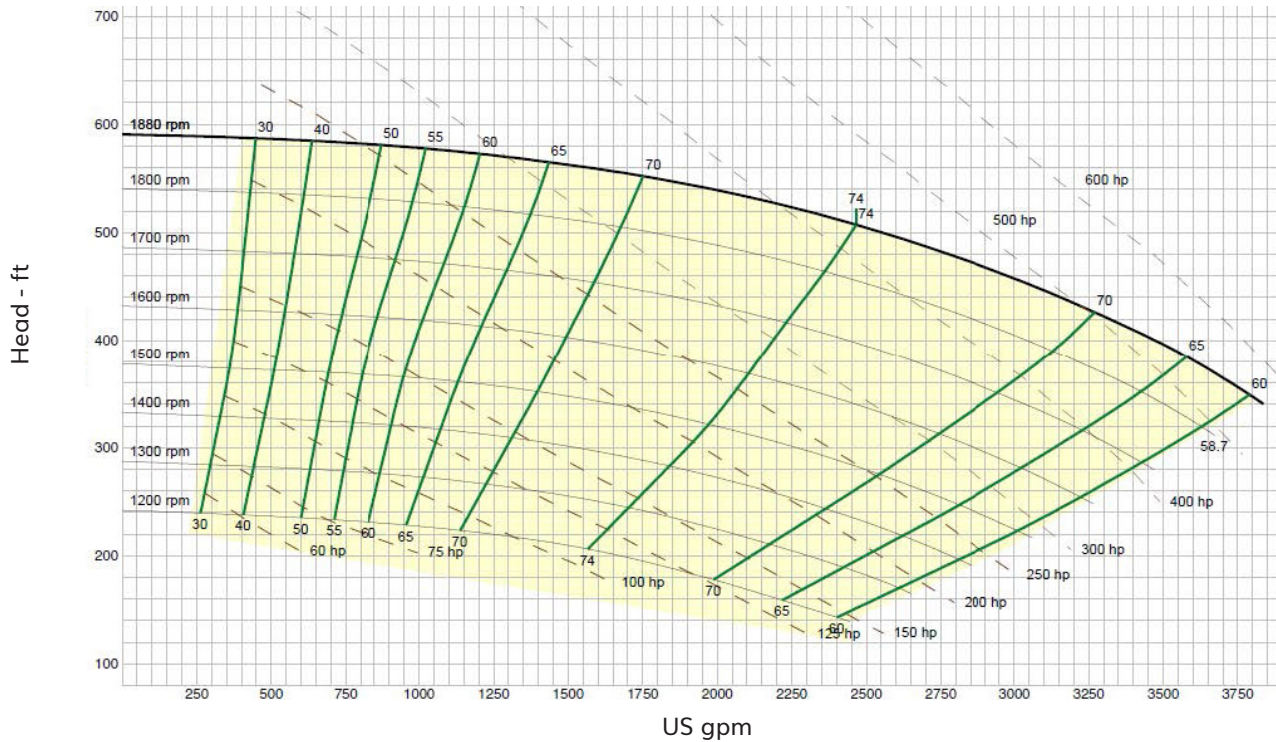


Contact Us Today at 1-855-955-CCIS (2247) or Visit CrossCountryIS.com

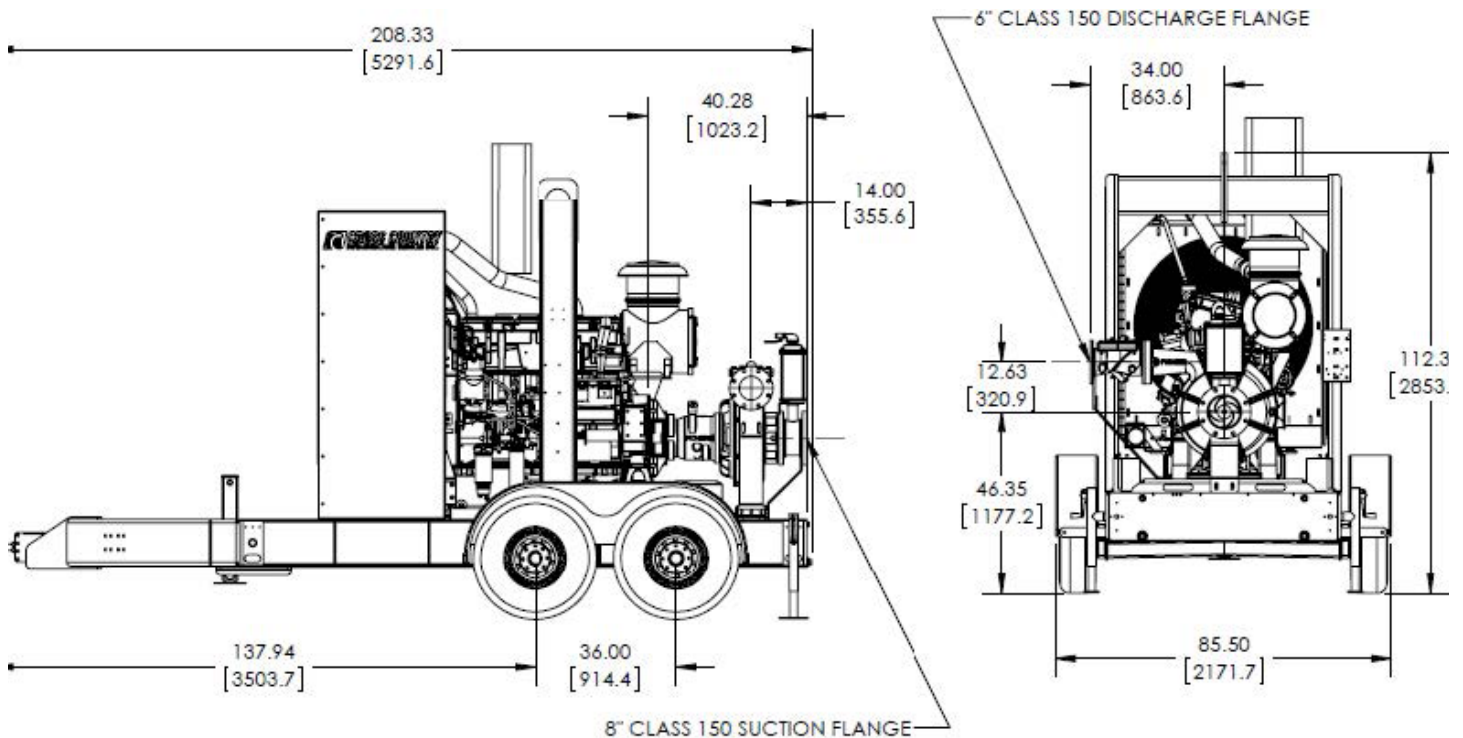
Specification Data

Pioneer Venturi Prime - Vacuum Assisted Centrifugal Pump, Diesel-Driven Package

Performance Curve



Mechanical Drawing



Contact Us Today at 1-855-955-CCIS (2247) or Visit CrossCountryIS.com