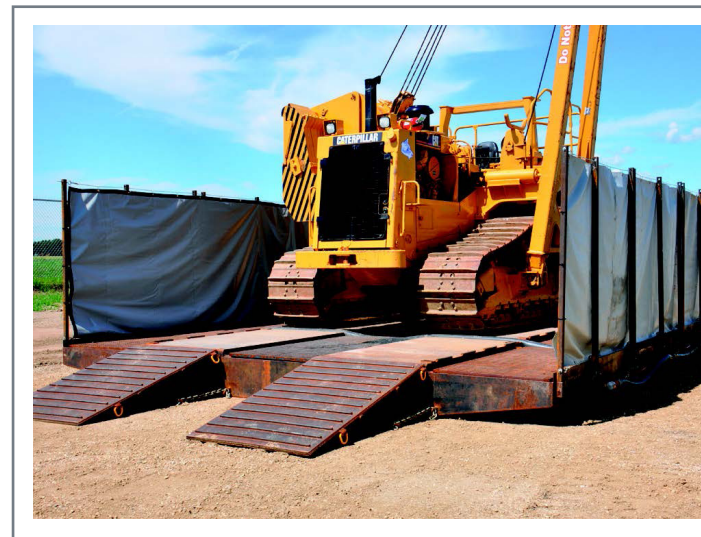




CCIS WASH PADS

CCIS Wash Pads all come with the following features:

- System consists of four individual sections and four individual ramps.
- All sections fasten together with chains to allow each section to move and follow the contour of the ground. This is specifically done this way to allow for Cross County type of construction; (Pipeline, Power line, Road Building) where level areas are not always practical for quick set up.
- A total of 3500 gallons of fluid and solids capacity within the containment tanks.
- Side Curtains prevent any over spray from exiting the wash pad.
- Rubber seals connect each section together so there is 100% containment of all fluids.
- Wash Pad sections can be connected with 2" hoses to allow for fluid equalization or for skimming fluid off and pumping it into a tank for disposal at a later time.
- Weight rating of 150,000 lbs. Up to a D10 can be placed on the system without damaging the structure.
- Solid metal surface on driving areas will withstand any tracked machine including ice lugs in the winter.
- System can be heated by using glycol heaters to keep water from freezing in the winter.
- Complete system weighs approximately 42,000 lbs so it can be hauled in one load on a high bot or step deck trailer.
- If moved with a picker truck and trailer, the system can be unloaded, set up, and ready to wash in 45 minutes. The same time frame applies for breakdown and loading to change locations.
- All containment tanks are free of any structures to allow for easy cleaning.
- All grates fold up to allow for easy access.



For Pricing And Availability Contact Our Sales Team at 1-855-955-CCIS (2247)