

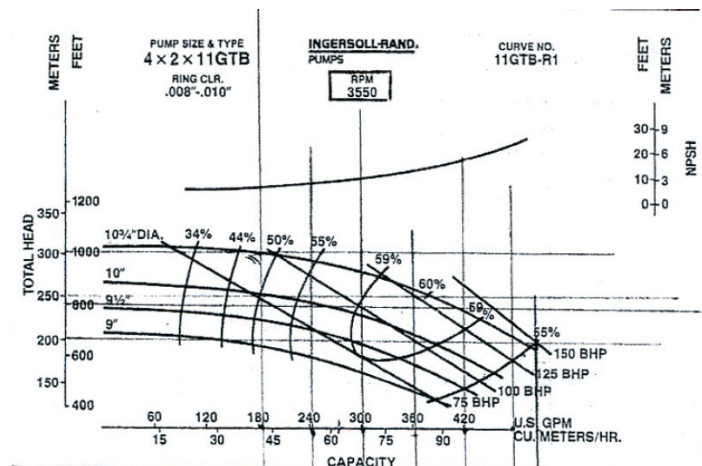


## PAI Model 100-IR4X2 GRB

The PAI Model 100-4X2 Pump Package is designed for a broad range of pumping applications requiring high volume or high head. The IR 4X2 pump is powered by a Detroit/Perkins power unit producing 155 HP @ 2400 RPM.

### FEATURES

- Compact Size
- Dimensions 39" W X 72" H X 120" L
- Pump - Two Stage Horizontal split case equipped with mechanical seals.
- Heavy duty skid base with drip pan, built-in fuel tank, and equipped with single point lift.
- Pump suction flange 4" - 150#; Discharge Flange 2" - 300#
- Optional 2" - 300# discharge check valve
- Optional 4" -victaulic suction adapter.



Flow and Pressure Based on 10-3/4" impellers.

Specifications shown for this model. Contact us for information on additional models.  
Specifications subject to change without notice.



Contact Us Today at **1-855-955-CCIS (2247)** or Visit **CrossCountryIS.com**