

SCAIP Flat Bed Tractors



FEATURES

Enclosed Rops Cabin

With heating and cooling system.



Hydrostatic System

State-of-the-art hydrostatic system ensures safety and reliability and is especially efficient when working on steep grades



Track Control

With the joystick the operator can increase/decrease the engine's throttle, and control the machine's travel.



ENGINE CAT® or PERKINS® Tier3 or Tier4 final

U.S. EPA Tier 4 Final/EU Stage IV
or U.S. EPA Tier 3/EU Stage IIIA
equivalent.



*The Right Product &
Service **Every Time***

SCAIP Flat Bed Tractor Specs and Models



Accessories

HYDRAULIC BOOM

PLATFORM

DUMPER

WELDING STATION

CONTAINER CHASSIS
(for container
12m – 20 ft).



SRT-125

SRT-155

SRT-180

SRT-250

Operating Weight
7.8 t / 17,200 lb

Net Flywheel Power
129 kW / 173hp

Payload
4.8 t / 11,580 lb

Speed travel
9 km/h / 5.6 mi/h

Operating Weight
9.5 t / 20,950 lb

Net Flywheel Power
151 kW / 202hp

Payload
6.0 t / 13,230 lb

Speed travel
7.4 km/h / 4.6 mi/h

Operating Weight
12.5 t / 27,560lb

Net Flywheel Power
168 kW / 225hp

Payload
10 t / 22,050 lb

Speed travel
8 km/h / 5 mi/h

Operating Weight
13.5 t / 29,760lb

Net Flywheel Power
186 kW / 250hp

Payload
12 t / 26,450 lb

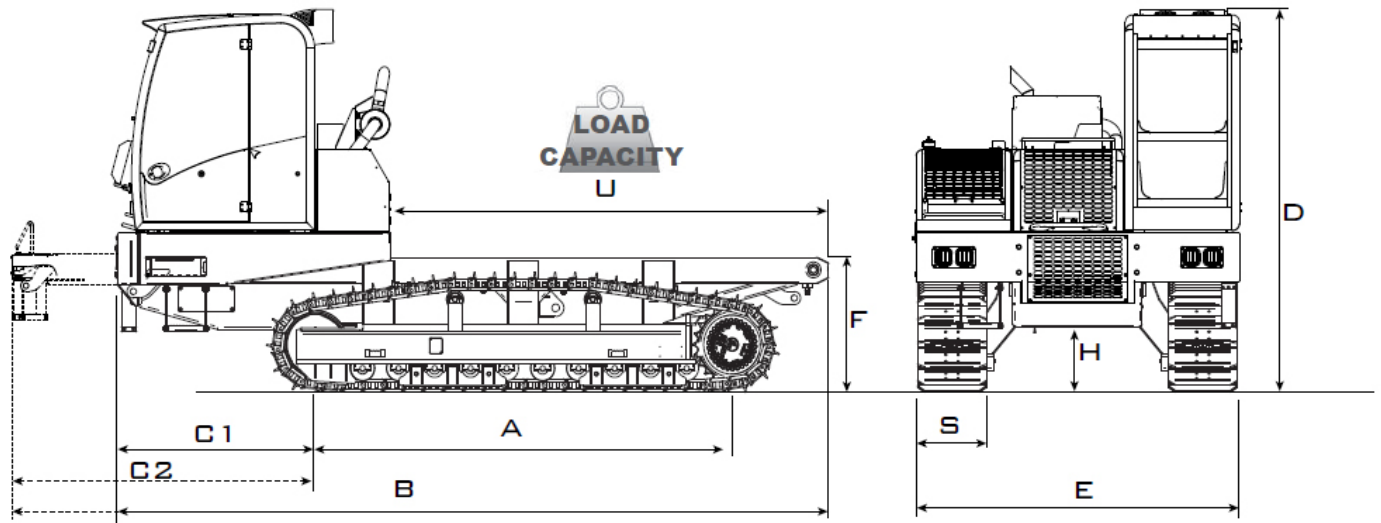
Speed travel
8.3 km/h / 5.1 mi/h

The SFT Series, which are equipped with steel made crawlers, have different operating weights and speed travel.

**For Pricing And Availability Contact Our Sales Team at 780-962-6559
or Visit CrossCountryIS.com/scaip**

Specifications

Tracked Undercarriage

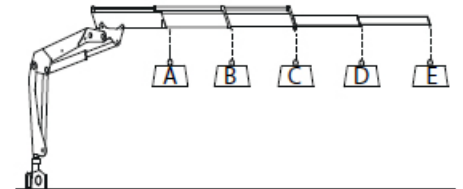


	ENGINE POWER	WEIGHT	LOAD CAPACITY	MAX SPEED	DIMENSIONS (mm)									
	(kW)	(kg)	(kg)	(km/h)	A	B	C1	C2	D	E	F	H	U	S
SFT 105	106	6.400	3.900	6,5	3.000	4.600	900	-	2.500	2.000	900	410	2.700	450
SFT 125	129	8.500	4.800	6,5	3.150	4.900	950	-	2.500	2.200	900	410	3.000	450
SFT 155	151	8.900	7.100	6,0	3.310	5.640	1.575	-	3.000	2.550	1.065	510	3.460	550
SFT 155FC	151	9.000	7.000	6,0	3.310	5.740	-	1.650	3.000	2.550	1.065	510	3.000	550
SFT 180	168	12.000	10.000	6,0	3.450	6.585	1.750	-	3.000	2.762	1.200	510	3.750	762
SFT 180FC	168	12.000	10.000	6,0		6.975	-	1.650	3.000	2.762	1.200	510	3.350	762
SFT 225	168	15.000	9.000	6,0	3.670	5.815	1.645	-	3.000	2.550	1.300	620	2.830	555
SFT 250	180	15.000	12.000	5,5	3.670	7.040	1.600	-	3.060	2.950	1.180	520	2.820	610

Dumper



TYPE	MAX LOAD CAPACITY	WEIGHT	WIDTH	LENGTH
2.7	2.7 m ³	1.300 kg	2,50 m	3,2 m
7	7 m ³	2.000 kg	2,50 m	3,2 m



Boom



TYPE	MAX LIFTING MOMENT	WEIGHT	A	B	C	D	E
72	70.6 kNm	980 kg	2880 kg to 2.5 m	2400 kg to 3.0 m	2020 kg to 3.5 m	1300 kg to 5.2 m	900 kg to 7.0 m
102	96 kNm	1440 kg	2450 kg to 4.0 m	1600 kg to 6.0 m	1170 kg to 8.0 m	800 kg to 10.0 m	580 kg to 12.1 m
130	189 kNm	2090 kg	4335 kg to 4.4 m	2960 kg to 6.2 m	2185 kg to 8.2 m	1690 kg to 10.2 m	1330 kg to 12.3 m